

ZINERIC

SWITCHGEAR CATALOG





DEDICATED SWITCHBOARDS

We offer prefabricated models of standard switchgear and also carry out customised orders, enabling components and protections to be configured according to individual design.

Our products are characterised by:

- Polish production guaranteeing constant availability and the possibility of prefabricating switchboards according to customer specifications.
- Product warranty of up to 5 years on selected switchgear models.
- Manufactured in accordance with IEC 61439-1, 61439-2.
- UV-resistant, as certified.
- Degree of protection IP65 for the STANDARD series and IP66 for the INDUSTRIAL series.
- Polish technical service and in-house R&D department.
- Production capacity of 1,000 units per day, up to 240,000 units per year.

More information can be found
on our website:

zineric.com

A STANDARD THAT MEETS NORMS

From the point of view of safety, one of the key elements of switchgear, in addition to correctly selected equipment, is correctly made connections. Above all, they have a significant impact on the correctness of the entire switchgear prefabrication process. To ensure the switchgear's safety and reliability, it is manufactured in accordance with standards and complies with the requirements of European Union directives.

The electrical switchgear has been manufactured in accordance with the standards described below:

IEC 61439-1 Low-voltage switchgear and controlgear assemblies, Part 1: General requirements.

IEC 61439-2 Low-voltage switchgear and controlgear, Part 2: General requirements.

They also comply with the following guidelines:

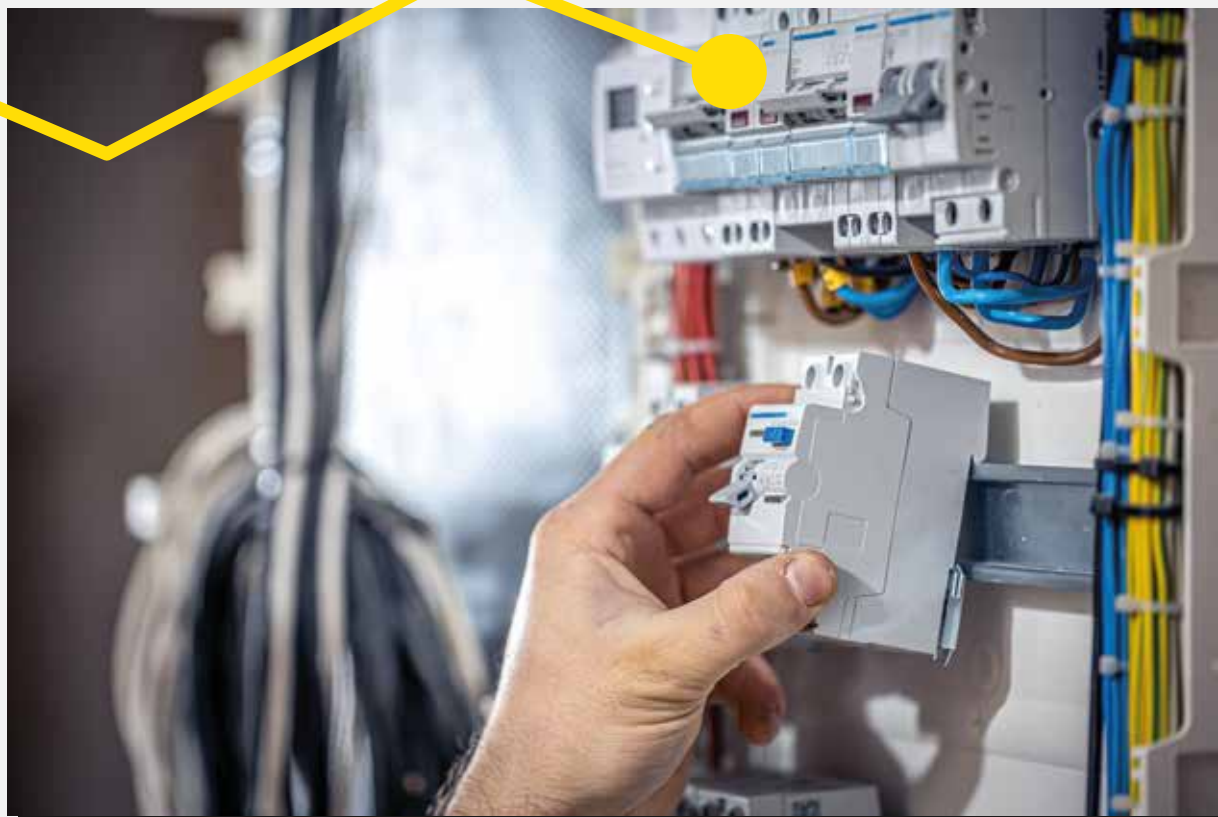
Low Voltage Directive LVD 2014/35/EU Concerns the harmonization of member states' regulations relating to the making available on the market of electrical equipment designed for use within certain voltage limits, i.e. equipment operating between 50 and 1,000 volts AC and between 75 and 1,500 volts DC.

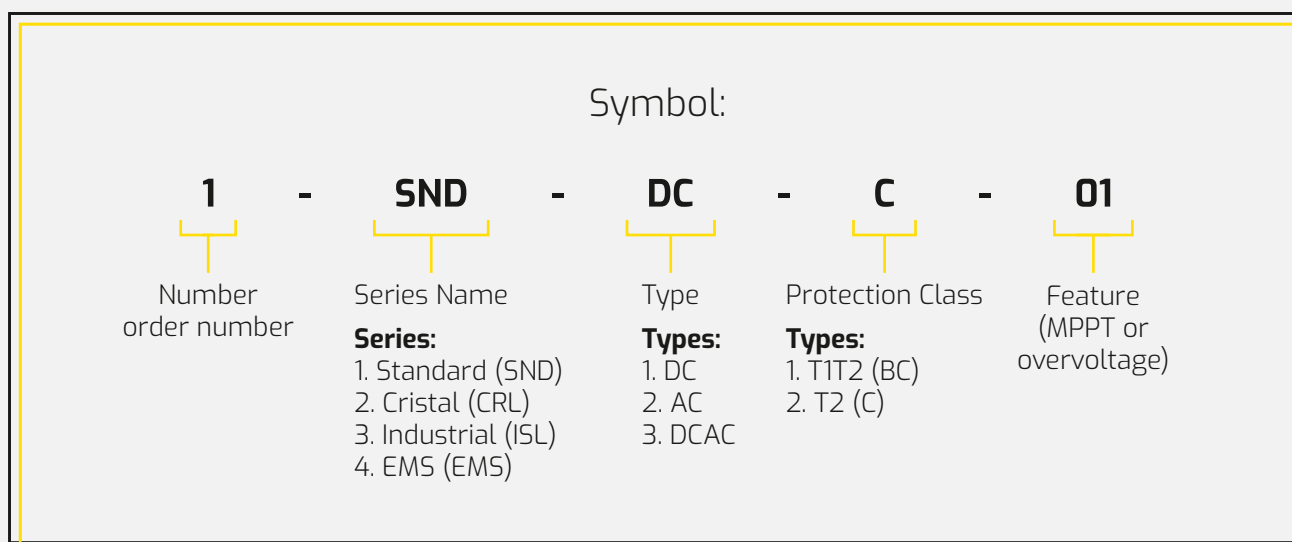
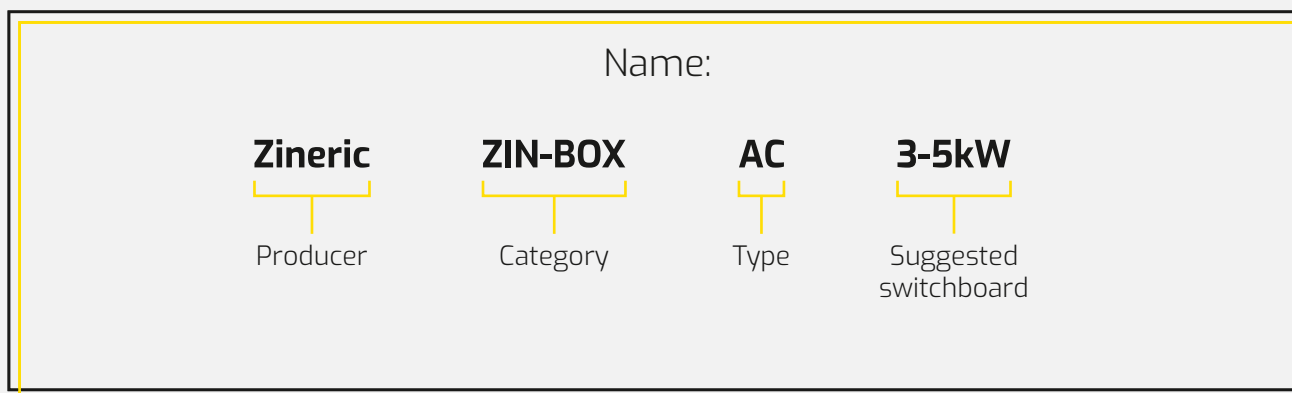
EMC Directive 2014/30/EU Applies to any finished device or combination of finished devices in which electromagnetic emissions are limited and maintained such that interference-free operation is possible.

RoHS Directive 2011/65/EU Defines and restricts the use of hazardous substances in electrical and electronic equipment (EEE) to protect human health and the environment at all stages of a product's life.

ZINERIC SWITCHGEAR

- Our product range includes DC, AC and DCAC switchgear.
- They comply with IEC 61439-1 and 61439-2 standards and are certified for UV resistance.
- Degrees of protection from IP65 to IP66, certified for voltages of 1500 V DC and 400 V AC.
- Exclusive use of original MC4 (Stäubli) connectors, which reduce the risk of fire due to overheating of connectors or arc discharge.
- We inspect every single plug to make sure it was manufactured correctly.
- The unique, ultra-flexible, tin-plated cable has been tested for 6,000 volts and has an expected life of at least 25 years.
- 5-year warranty on the entire switchboard with Phoenix or Noark components.
- Reduce the number of cables by mounting components on a special Noark rail.
- OdResistance to failures and simplified installation due to the placement of AC-side components on comb rails.
- Doors with the ability to change the direction of opening.
- Production of each switchgear under close supervision with a two-stage test procedure.





There is an individual possibility of replacing the protectors with apparatus of another manufacturer or other characteristics, other number of MPPT, as well as replacement with another type of box housing (for example, flush-mounted).

Below is a list of optional add-ons/modifications:

- (AC)** residual current device (RCD 100mA or 300mA)
- (AC)** replacement of apparatus from 3 phase to 1 phase
- (DC)** additional MC4 connectors
- (DC)** abandonment of MC4 terminals with replacement with chokes
- (DC)** gPV fuse
- (DC or AC)** isolation switch (also with trip)
- (DC or AC)** safety button
- (DC or AC)** PG7 glands for apparatus screw terminals
- (DC or AC)** Phoenix spring connectors
- (DC or AC)** replacement with another type of box (e.g. flush-mounted)
- (DC or AC)** replacement with preferred apparatus manufacturer (among those listed below)

Modular apparatus in the boxes come from high-end manufacturers such as Noark, Phoenix Contact, OBO, Zineric, Staubli.

*In standard boxes, surge protection in the form of arresters is characterized by $U_{cpv} = 1000V$.

*A gPV fuse or DC disconnect switch for different amperages can be optionally added to each of the DC boxes.

DC-Standard



DC Standard switchgear is successfully used in small and medium-sized domestic and industrial installations. Thanks to their versatility, they can be used in various conditions. Degree of protection IP65, means that the switchboards can be installed not only in enclosed spaces, but also in open areas.

Proven standard housing

The most popular type of housing in the Zineric range

Option to install a key lock

Transparent doors

■ DC-STANDARD

Type	4T	8T	12T	24T	36T	48T
Dimensions (without connectors)	201x128x120	201x202x120	259x319x144	384x319x144	508x319x144	664x319x144
Number of fields in a row	4	8	12	12	12	12
Number of rows	1	1	1	2	3	4
Expandability	No					
Key lock	Optional					
Mounting method	Surface mounting					
Degree of protection	IP 65					
Protection class	II					
Rated insulation voltage Ui	400 V AC, 1500 V DC					
Performance in accordance with	EN 60670, EN 62208					
UV resistance	Yes					
Impact resistance	IK 08					
Glow rod test	650°C					
Operating temperature	-25°C – +60°C					
Plastic to be recycled	Halogen-free					

Number of strings (MPPT) Installations without lightning protection (T2) Installations from lightning protection (T2)

Single-string	1-SND-DC-C-01	7-SND-DC-BC-01
Two-string	2-SND-DC-C-02	8-SND-DC-BC-02
Three-string	3-SND-DC-C-03	9-SND-DC-BC-03
Four-string	4-SND-DC-C-04	10-SND-DC-BC-04
Five-string	5-SND-DC-C-05	11-SND-DC-BC-05
Six-string	6-SND-DC-C-06	12-SND-DC-BC-06

■ Class C: DC Switchgear with T2 Limiter

Class C products - DC switchgear with T2 arresters offer basic protection on the DC side, i.e. surge protection.

*The switchgear in this series is mainly chosen for the number of chains (MPPT in a PV system).

1-SND-DC-C-01

ZIN-BOX DC switchgear / 1xMPPT / T2 limiter



IP 65

Number of MPPT	1
Maximum current per MPPT	30A
Switchgear ready for connection	Inside and outside
DC surge protector	T2
Total DC discharge current I _{max}	40kA
Rated voltage U _{oc}	1000V
Rated insulation voltage	400V AC, 1500V DC

2-SND-DC-C-02

ZIN-BOX DC switchgear / 2xMPPT / T2 limiter



IP 65

Number of MPPT	2
Maximum current per MPPT	30A
Switchgear ready for connection	Inside and outside
DC surge protector	T2
Total DC discharge current I _{max}	40kA
Rated voltage U _{oc}	1000V
Rated insulation voltage	400V AC, 1500V DC

3-SND-DC-C-03

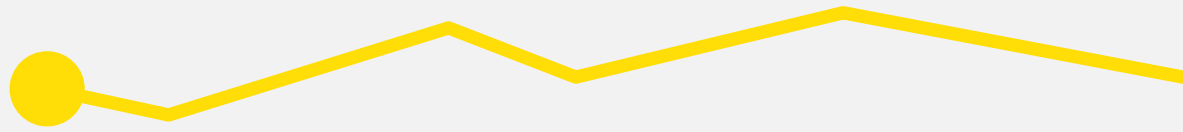
ZIN-BOX DC switchgear / 3xMPPT / T2 limiter



IP 65

Number of MPPT	3
Maximum current per MPPT	30A
Switchgear ready for connection	Inside and outside
DC surge protector	T2
Total DC discharge current I _{max}	40kA
Rated voltage U _{oc}	1000V
Rated insulation voltage	400V AC, 1500V DC

■ Class C: DC Switchgear with T2 Limiter



4-SND-DC-C-04

ZIN-BOX DC switchgear / 4xMPPT / T2 limiter



IP 65

Number of MPPT	4
Maximum current per MPPT	30A
Switchgear ready for connection	Inside and outside
DC surge protector	T2
Total DC discharge current I_{max}	40kA
Rated voltage U_{oc}	1000V
Rated insulation voltage	400V AC, 1500V DC

5-SND-DC-C-05

ZIN-BOX DC switchgear / 5xMPPT / T2 limiter



IP 65

Number of MPPT	5
Maximum current per MPPT	30A
Switchgear ready for connection	Inside and outside
DC surge protector	T2
Total DC discharge current I_{max}	40kA
Rated voltage U_{oc}	1000V
Rated insulation voltage	400V AC, 1500V DC

6-SND-DC-C-06

ZIN-BOX DC switchgear / 6xMPPT / T2 limiter



IP 65

Number of MPPT	6
Maximum current per MPPT	30A
Switchgear ready for connection	Inside and outside
DC surge protector	T2
Total DC discharge current I_{max}	40kA
Rated voltage U_{oc}	1000V
Rated insulation voltage	400V AC, 1500V DC

■ Class BC: DC Switchgear with T1T2 Limiter

BC-class products - DC switchgear with T1T2 arresters offer basic protection on the DC side, i.e. overvoltage protection.

*The switchgear in this series is mainly chosen for the number of chains (MPPT in a PV system).

7-SND-DC-BC-01

ZIN-BOX DC switchgear / 1xMPPT / T1T2 limiter



IP 65

Number of MPPT	1
Maximum current per MPPT	30A
Switchgear ready for connection	Inside and outside
DC surge protector	T1T2
Total DC discharge current I _{max}	40kA
Rated voltage U _{oc}	1000V
Rated insulation voltage	400V AC, 1500V DC

8-SND-DC-BC-02

ZIN-BOX DC switchgear / 2xMPPT / T1T2 limiter



IP 65

Number of MPPT	2
Maximum current per MPPT	30A
Switchgear ready for connection	Inside and outside
DC surge protector	T1T2
Total DC discharge current I _{max}	40kA
Rated voltage U _{oc}	1000V
Rated insulation voltage	400V AC, 1500V DC

9-SND-DC-BC-03

ZIN-BOX DC switchgear / 3xMPPT / T1T2 limiter



IP 65

Number of MPPT	3
Maximum current per MPPT	30A
Switchgear ready for connection	Inside and outside
DC surge protector	T1T2
Total DC discharge current I _{max}	40kA
Rated voltage U _{oc}	1000V
Rated insulation voltage	400V AC, 1500V DC

■ Class BC: DC Switchgear with T1T2 Limiter

10-SND-DC-BC-04

ZIN-BOX DC switchgear / 4xMPPT / T1T2 limiter



IP 65

Number of MPPT	4
Maximum current per MPPT	30A
Switchgear ready for connection	Inside and outside
DC surge protector	T1T2
Total DC discharge current I _{max}	40kA
Rated voltage U _{oc}	1000V
Rated insulation voltage	400V AC, 1500V DC

11-SND-DC-BC-05

ZIN-BOX DC switchgear / 5xMPPT / T1T2 limiter



IP 65

Number of MPPT	5
Maximum current per MPPT	30A
Switchgear ready for connection	Inside and outside
DC surge protector	T1T2
Total DC discharge current I _{max}	40kA
Rated voltage U _{oc}	1000V
Rated insulation voltage	400V AC, 1500V DC

12-SND-DC-BC-06

ZIN-BOX DC switchgear / 6xMPPT / T1T2 limiter



IP 65

Number of MPPT	6
Maximum current per MPPT	30A
Switchgear ready for connection	Inside and outside
DC surge protector	T1T2
Total DC discharge current I _{max}	40kA
Rated voltage U _{oc}	1000V
Rated insulation voltage	400V AC, 1500V DC

It is possible to individually replace the circuit breakers with devices from another manufacturer or with different characteristics, a different number of MPPTs, as well as to replace the box with a different type of housing (such as flush-mounted).

It is also possible to expand the modular device by adding a gPV fuse or DC circuit breaker.

AC-Standard



AC Standard switchgear is successfully used in small and medium-sized domestic and industrial installations. Thanks to their versatility, they can be used in various conditions. Degree of protection IP65, means that the switchboards can be installed not only in enclosed spaces, but also in open areas.

Proven standard housing

The modular boxed devices come from high-end manufacturers, such as Noark, Phoenix Contact, OBO, Zineric, Staubli

Option to install a key lock

Transparent doors

■ AC-STANDARD

Type	4T	8T	12T	24T	36T	48T
Dimensions (without connectors)	201x128x120	201x202x120	259x319x144	384x319x144	508x319x144	664x319x144
Number of fields in a row	4	8	12	12	12	12
Number of rows	1	1	1	2	3	4
Expandability	No					
Key lock	Optional					
Mounting method	Surface mounting					
Degree of protection	IP 65					
Protection class	II					
Rated insulation voltage Ui	400 V AC, 1500 V DC					
Performance in accordance with	EN 60670, EN 62208					
UV resistance	Yes					
Impact resistance	IK 08					
Glow rod test	650°C					
Operating temperature	-25°C – +60°C					
Plastic to be recycled	Halogen-free					

Inverter power (kW)

Installation without lightning protection (T2)

Installation with lightning protection (TT2)

3-5 kW

21-SND-AC-C-10

26-SND-AC-BC-10

6-8 kW

22-SND-AC-C-16

27-SND-AC-BC-16

9-10 kW

23-SND-AC-C-25

28-SND-AC-BC-25

11-12 kW

24-SND-AC-C-32

29-SND-AC-BC-32

13-15kW

25-SND-AC-C-40

30-SND-AC-BC-40

***Note:** For ease of product navigation, it has been suggested to select AC-side modular apparatus under the power of the inverter. However, each time for proper selection of switchgear, it is necessary to carefully read the inverter data sheet and have the appropriate Zineric switchgear selected by a qualified electrician.

■ Class C: AC Switchgear with T2 Limiter

Class C products - AC switchgear with T2 arresters provide basic protection on the AC side, i.e. surge arresters.

*This series of switchgear is mainly selected because of the power of the inverter.

21-SND-AC-C-10

Switchgear ZIN-BOX AC 3-5 kW / Limiter T2 / 10A



IP 65

Switchgear ready for connection	Inside and outside
AC surge arrester	T2
Rated current of the circuit breaker	AC 10A
Total discharge current I _{max}	40 kA / 50 kA
Voltage protection level	<1,5 kV
Rated insulation voltage	400V AC, 1500V DC

22-SND-AC-C-16

Switchgear ZIN-BOX AC 36-8 kW / Limiter T2 / 16A



IP 65

Switchgear ready for connection	Inside and outside
AC surge arrester	T2
Rated current of the circuit breaker	AC 16A
Total discharge current I _{max}	40 kA / 50 kA
Voltage protection level	<1,5 kV
Rated insulation voltage	400V AC, 1500V DC

23-SND-AC-C-25

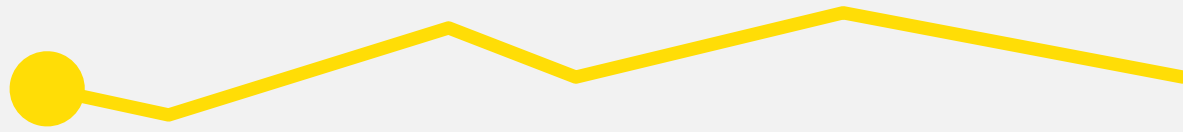
Switchgear ZIN-BOX AC 9-10 kW / Limiter T2 / 20A



IP 65

Switchgear ready for connection	Inside and outside
AC surge arrester	T2
Rated current of the circuit breaker	AC 20A
Total discharge current I _{max}	40 kA / 50 kA
Voltage protection level	<1,5 kV
Rated insulation voltage	400V AC, 1500V DC

■ Class C: AC Switchgear with T2 Limiter



24-SND-AC-C-32

Switchgear ZIN-BOX AC 11-12 kW / Limiter T2 / 32A



IP 65

Switchgear ready for connection	Inside and outside
AC surge arrester	T2
Rated current of the circuit breaker	AC 32A
Total discharge current I _{max}	40 kA / 50 kA
Voltage protection level	<1,5 kV
Rated insulation voltage	400V AC, 1500V DC

25-SND-AC-C-40

Switchgear ZIN-BOX AC 13-15 kW / Limiter T2 / 40A



IP 65

Switchgear ready for connection	Inside and outside
AC surge arrester	T2
Rated current of the circuit breaker	AC 40A
Total discharge current I _{max}	40 kA / 50 kA
Voltage protection level	<1,5 kV
Rated insulation voltage	400V AC, 1500V DC

It is possible to individually replace the circuit breakers with devices from another manufacturer or with different characteristics, a different number of MPPTs, as well as to replace the box with a different type of housing (such as flush-mounted).

It is also possible to expand the modular device by adding a gPV fuse or DC circuit breaker.

■ Class BC: AC Switchgear with T1T2 Limiter

BC-class products - AC switchgear with T1T2 arresters provide basic protection on the AC side, i.e. surge arresters.

*This series of switchgear is mainly selected because of the power of the inverter.

26-SND-AC-BC-10

Switchgear ZIN-BOX AC 3-5 kW / Limiter T1T2 / 10A



IP 65

Switchgear ready for connection	Inside and outside
AC surge arrester	T1T2
Rated current of the circuit breaker	AC 10A
Total discharge current I _{max}	40 kA / 50 kA
Voltage protection level	<1,5 kV
Rated insulation voltage	400V AC, 1500V DC

27-SND-AC-BC-16

Switchgear ZIN-BOX AC 6-8 kW / Limiter T1T2 / 16A



IP 65

Switchgear ready for connection	Inside and outside
AC surge arrester	T1T2
Rated current of the circuit breaker	AC 16A
Total discharge current I _{max}	40 kA / 50 kA
Voltage protection level	<1,5 kV
Rated insulation voltage	400V AC, 1500V DC

28-SND-AC-BC-25

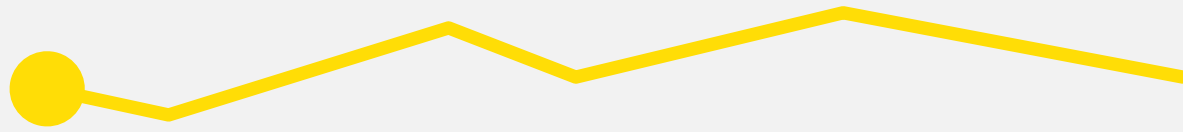
Switchgear ZIN-BOX AC 9-10 kW / Limiter T1T2 / 20A



IP 65

Switchgear ready for connection	Inside and outside
AC surge arrester	T1T2
Rated current of the circuit breaker	AC 20A
Total discharge current I _{max}	40 kA / 50 kA
Voltage protection level	<1,5 kV
Rated insulation voltage	400V AC, 1500V DC

■ Class BC: AC Switchgear with T1T2 Limiter



29-SND-AC-BC-32

Switchgear ZIN-BOX AC 11-12 kW / Limiter T1T2 / 32A



IP 65

Switchgear ready for connection	Inside and outside
AC surge arrester	T1T2
Rated current of the circuit breaker	AC 32A
Total discharge current I _{max}	40 kA / 50 kA
Voltage protection level	<1,5 kV
Rated insulation voltage	400V AC, 1500V DC

30-SND-AC-BC-40

Switchgear ZIN-BOX AC 13-15 kW / Limiter T1T2 / 40A



IP 65

Switchgear ready for connection	Inside and outside
AC surge arrester	T1T2
Rated current of the circuit breaker	AC 40A
Total discharge current I _{max}	40 kA / 50 kA
Voltage protection level	<1,5 kV
Rated insulation voltage	400V AC, 1500V DC

It is possible to individually replace the circuit breakers with devices from another manufacturer or with different characteristics, a different number of MPPTs, as well as to replace the box with a different type of housing (such as flush-mounted).

It is also possible to expand the modular device by adding a gPV fuse or DC circuit breaker.

DCAC-Standard



DCAC Standard switchgear is successfully used in small and medium-sized domestic and industrial installations. Thanks to their versatility, they can be used in various conditions. Degree of protection IP65, means that the switchboards can be installed not only in closed rooms, but also in open spaces.

Proven standard housing

The modular boxed devices come from high-end manufacturers, such as Noark, Phoenix Contact, OBO, Zineric, Staubli

Option to install a key lock

Transparent doors

■ DCAC-STANDARD

Type	4T	8T	12T	24T	36T	48T
Dimensions (without connectors)	201x128x120	201x202x120	259x319x144	384x319x144	508x319x144	664x319x144
Number of fields in a row	4	8	12	12	12	12
Number of rows	1	1	1	2	3	4
Expandability	No					
Key lock	Optional					
Mounting method	Surface mounting					
Degree of protection	IP 65					
Protection class	II					
Rated insulation voltage Ui	400 V AC, 1500 V DC					
Performance in accordance with	EN 60670, EN 62208					
UV resistance	Yes					
Impact resistance	IK 08					
Glow rod test	650°C					
Operating temperature	-25°C – +60°C					
Plastic to be recycled	Halogen-free					

Inverter Power (kW)	Installation without lightning protection (T2)		Installation with lightning protection (TIT2)	
	1 string	2 stringi	1 string	2 stringi
3-5 kW	31-SND-DCAC-C-01/10		37-SND-DCAC-BC-01/10	
6-8 kW	32-SND-DCAC-C-01/16	33-SND-DCAC-C-02/16	38-SND-DCAC-BC-01/16	39-SND-DCAC-BC-02/16
9-10 kW		34-SND-DCAC-C-02/20		40-SND-DCAC-BC-02/20
11-12 kW		35-SND-DCAC-C-02/32		41-SND-DCAC-BC-02/32
13-15kW		36-SND-DCAC-C-02/40		42-SND-DCAC-BC-02/40

***Note:** For ease of product navigation, it has been suggested to select modular apparatus on the AC side under the power of the inverter, and on the DC side under the number of MPPT. However, each time, in order to select the switchgear correctly, the inverter data sheet should be read carefully and the appropriate Zineric switchgear should be selected by a qualified electrician.

■ Class C: DCAC Switchgear with T2 Limiter

Class C - DCAC products with T2 arresters provide basic protection on the DC and AC side, i.e. surge arresters.

*This series of switchgear is mainly selected based on the number of chains and inverter power.

31-SND-DCAC-C-01/10

Switchgear ZIN-BOX DCAC 3-5 kW / 1xMPPT / T2 Limiter / 10A



IP 65

Number of MPPT	1
Maximum current per MPPT	30A
Switchgear ready for connection	Inside and outside
DC and AC surge arresters	T2
Rated current of the circuit breaker	AC 10A
Total discharge current I _{max}	40 kA / 50 kA
Voltage protection level	<1,5 kV
Rated insulation voltage	400V AC, 1500V DC

32-SND-DCAC-C-01/16

Switchgear ZIN-BOX DCAC 6-8 kW / 1xMPPT / T2 Limiter / 16A



IP 65

Number of MPPT	1
Maximum current per MPPT	30A
Switchgear ready for connection	Inside and outside
DC and AC surge arresters	T2
Rated current of the circuit breaker	AC 16A
Total discharge current I _{max}	40 kA / 50 kA
Voltage protection level	<1,5 kV
Rated insulation voltage	400V AC, 1500V DC

33-SND-DCAC-C-02/16

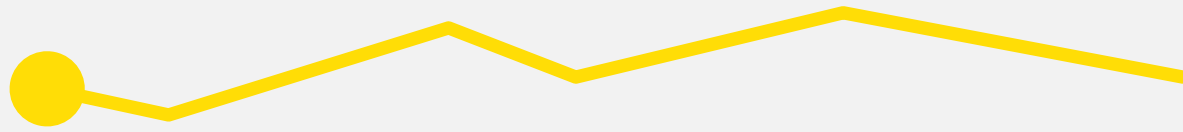
Switchgear ZIN-BOX DCAC 6-8 kW / 2xMPPT / T2 Limiter / 16A



IP 65

Number of MPPT	2
Maximum current per MPPT	30A
Switchgear ready for connection	Inside and outside
DC and AC surge arresters	T2
Rated current of the circuit breaker	AC 16A
Total discharge current I _{max}	40 kA / 50 kA
Voltage protection level	<1,5 kV
Rated insulation voltage	400V AC, 1500V DC

■ Class C: DCAC Switchgear with T2 Limiter



34-SND-DCAC-C-02/20

Switchgear ZIN-BOX DCAC 9-10 kW / 2xMPPT / T2 Limiter / 20A



IP 65

Number of MPPT	2
Maximum current per MPPT	30A
Switchgear ready for connection	Inside and outside
DC and AC surge arresters	T2
Rated current of the circuit breaker	AC 20A
Total discharge current I _{max}	40 kA / 50 kA
Voltage protection level	<1,5 kV
Rated insulation voltage	400V AC, 1500V DC

35-SND-DCAC-C-02/32

Switchgear ZIN-BOX DCAC 11-12 kW / 2xMPPT / T2 Limiter / 32A



IP 65

Number of MPPT	2
Maximum current per MPPT	30A
Switchgear ready for connection	Inside and outside
DC and AC surge arresters	T2
Rated current of the circuit breaker	AC 32A
Total discharge current I _{max}	40 kA / 50 kA
Voltage protection level	<1,5 kV
Rated insulation voltage	400V AC, 1500V DC

36-SND-DCAC-C-02/40

Switchgear ZIN-BOX DCAC 13-15 kW / 2xMPPT / T2 Limiter / 40A



IP 65

Number of MPPT	2
Maximum current per MPPT	30A
Switchgear ready for connection	Inside and outside
DC and AC surge arresters	T2
Rated current of the circuit breaker	AC 40A
Total discharge current I _{max}	40 kA / 50 kA
Voltage protection level	<1,5 kV
Rated insulation voltage	400V AC, 1500V DC

■ Class BC: DCAC Switchgear with T1T2 Limiter

BC - DCAC class products with T1T2 arresters provide basic protection on the DC and AC sides, i.e. surge arresters.

*This series of switchgear is mainly selected based on the number of chains and inverter power.

37-SND-DCAC-BC-01/10

Switchgear ZIN-BOX DCAC 3-5 kW / 2xMPPT / T1T2 Limiter / 10A



IP 65

Number of MPPT	1
Maximum current per MPPT	30A
Switchgear ready for connection	Inside and outside
DC and AC surge arresters	T1T2
Rated current of the circuit breaker	AC 10A
Total discharge current I _{max}	40 kA / 50 kA
Voltage protection level	<1,5 kV
Rated insulation voltage	400V AC, 1500V DC

38-SND-DCAC-BC-01/16

Switchgear ZIN-BOX DCAC 6-8 kW / 1xMPPT / T1T2 Limiter / 16A



IP 65

Number of MPPT	1
Maximum current per MPPT	30A
Switchgear ready for connection	Inside and outside
DC and AC surge arresters	T1T2
Rated current of the circuit breaker	AC 16A
Total discharge current I _{max}	40 kA / 50 kA
Voltage protection level	<1,5 kV
Rated insulation voltage	400V AC, 1500V DC

39-SND-DCAC-BC-02/16

Switchgear ZIN-BOX DCAC 6-8 kW / 2xMPPT / T1T2 Limiter / 16A



IP 65

Number of MPPT	2
Maximum current per MPPT	30A
Switchgear ready for connection	Inside and outside
DC and AC surge arresters	T1T2
Rated current of the circuit breaker	AC 16A
Total discharge current I _{max}	40 kA / 50 kA
Voltage protection level	<1,5 kV
Rated insulation voltage	400V AC, 1500V DC

■ Class BC: DCAC Switchgear with T1T2 Limiter

40-SND-DCAC-BC-02/20

Switchgear ZIN-BOX DCAC 9-10 kW / 2xMPPT / T1T2 Limiter / 20A



IP 65

Number of MPPT	2
Maximum current per MPPT	30A
Switchgear ready for connection	Inside and outside
DC and AC surge arresters	T1T2
Rated current of the circuit breaker	AC 20A
Total discharge current I _{max}	40 kA / 50 kA
Voltage protection level	<1,5 kV
Rated insulation voltage	400V AC, 1500V DC

41-SND-DCAC-BC-02/32

Switchgear ZIN-BOX DCAC 11-12 kW / 2xMPPT / T1T2 Limiter / 32A



IP 65

Number of MPPT	2
Maximum current per MPPT	30A
Switchgear ready for connection	Inside and outside
DC and AC surge arresters	T1T2
Rated current of the circuit breaker	AC 32A
Total discharge current I _{max}	40 kA / 50 kA
Voltage protection level	<1,5 kV
Rated insulation voltage	400V AC, 1500V DC

42-SND-DCAC-BC-02/40

Switchgear ZIN-BOX DCAC 13-15 kW / 2xMPPT / T1T2 Limiter / 40A



IP 65

Number of MPPT	2
Maximum current per MPPT	30A
Switchgear ready for connection	Inside and outside
DC and AC surge arresters	T1T2
Rated current of the circuit breaker	AC 40A
Total discharge current I _{max}	40 kA / 50 kA
Voltage protection level	<1,5 kV
Rated insulation voltage	400V AC, 1500V DC

It is possible to individually replace the circuit breakers with devices from another manufacturer or with different characteristics, a different number of MPPTs, as well as to replace the box with a different type of housing (such as flush-mounted).

It is also possible to expand the modular device by adding a gPV fuse or DC circuit breaker.



ZINERIC
zineric@zineric.com